



FMFI initiative in partnership with



GE HealthCare

To Register visit

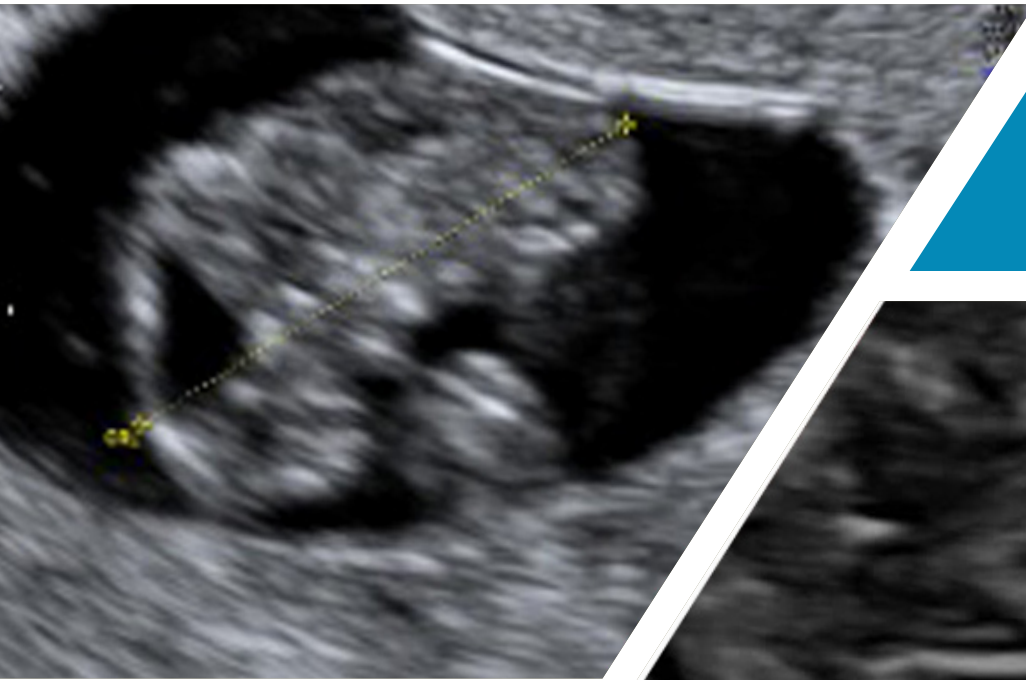
[www.fmfindia.in/obgyn](http://www.fmfindia.in/obgyn)

or Scan QR Code



**Gateway Courses** to  
Mastering Ultrasound in Obstetrics and Gynecology.

# 1 DAY HANDS-ON ULTRASOUND SIMULATION COURSE ON **FUNDAMENTALS OF OBGYN**



DATE

3<sup>rd</sup> February 2024

CITY

NEW DELHI

VENUE

INDRAPRASTHA APOLLO HOSPITAL

**Course Fee: Rs. 5,000/-**

Limited Registrations, thus facilitating a one-on-one learning.  
Certification by FMF India.

For any queries, please call Himanshi on 9899228408

# Programme



**DIRECTOR OF  
SIMULATOR COURSES  
& FACULTY**  
Dr Anita Kaul



**COURSE FACULTY  
AND SCIENTIFIC LEAD**  
Dr Supriya Seshadri

Pre course assessment, MCQ

10 Minutes

## US Basics

### Theory & Hands-On

1. Knobology
2. Methodology - transabdominal (TA) & transvaginal (TV)

9.00 - 10.00 AM

## Overview of Gyn US (Normal )

### Theory & Hands-On

1. Assessment of non-pregnant & Pelvic Anatomy, Normal/ abnormal
2. Assessment of Follicles, Endometrium (Basic infertility)

10.00 - 11.30 PM

Tea Break / Interaction

11.30 - 12.00

## Early Pregnancy Scan

### Theory & Hands-On

1. IUP<sup>1</sup>: Normal including Dating & Abnormal (miscarriage & RPOC<sup>2</sup>)
2. Ectopic pregnancy

12.00 - 1.15 PM

Lunch Break

1.15 - 2.00 PM

## 11 - 13 Weeks

### Theory & Hands-On

How to measure Correct CRL, NT, Concepts of Risk Calculation for Trisomy 21 ( Down syndrome)

2.00 - 3.00 PM

## 18-40 Weeks

### Theory & Hands-On

Assessing Lie, Presentation, Position, Biometry, Placenta, Amniotic fluid, EFW.

3.00 - 4.30 PM

## 22-24 Weeks

### Theory & Hands-On

Transvaginal Cervix assessment /Uterine Artery Doppler for screening for Preeclampsia and Preterm Labour

4.30 - 5.00 PM

## 12-40 Weeks

### Theory & Hands-On

How not to miss : NTD ( Neural Tube Defect)

5.00 - 5.30 PM

Post course assessment, MCQ

10 Minutes

\* 1 Intra uterine pregnancy

2 Retained products of conception