

# FMFI FETAL NEUROIMAGING CONFERENCE

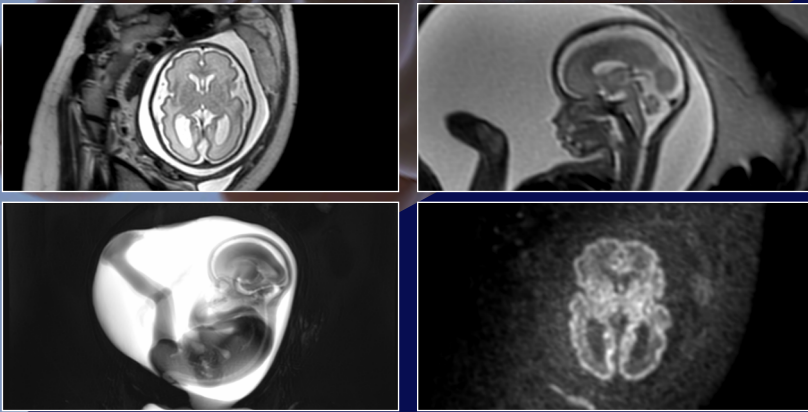
12-14 AUGUST 2022, GOA



POST CONFERENCE WORKSHOP

## Hands on Interactive Course on Fetal MRI - From Pixel to Practice

14th August, 9.00 AM to 7.00 PM



### International Faculty

- Dr. Elspeth Whitby ( University of Sheffield)
- Dr. Dilkash Kajal ( University of Toronto)
- Dr. Liat Ben Sira ( University of Tel Aviv)
- Dr. Mariana Schuette ( University of Vienna)

### National Faculty

- Dr Nitin Ghonge ( Apollo Hospitals, New Delhi)
- Dr. R Rajeswaran (Sri Ramachandra Hospital, Chennai)
- Dr. Nidhi Goyal ( Apollo Hospitals, New Delhi)
- Dr. Anita Kaul ( Apollo Hospitals, New Delhi)

## Register Now

[www.fmfindia.in/fetalneurogoa](http://www.fmfindia.in/fetalneurogoa)

For queries please contact:  
Renuka Sangle on +91 9373718171 or  
write to [info@fmfindia.in](mailto:info@fmfindia.in)

VENUE: CARAVELA BEACH RESORT, VARCA, GOA



SCAN TO REGISTER

## All sessions on interactive DICOM-viewer



PROUD SPONSOR:

# PHILIPS

# FINAL PROGRAMME

## Session 1

[ 15 mins  
9.00-9.15 AM ]

### Overview of Fetal MRI

- Clinical indications/contraindications.
- Patient scheduling/preparations.
- MR physics-Implications in image acquisition/interpretation.
- Important points in Maternal-Fetal Safety.
- PC-PNDT compliance.

## Session 2

[ 15 mins  
9.15-9.30 AM ]

### Image Acquisition: MR sequences & protocols

- Review of basic MR sequences.
- Acquisition Scan Protocols.
- Scan planning.

## Session 3

[ 1 hour  
9.30-10.30 AM ]

### Image Interpretation - Normal & Altered Fetal Anatomy

- Fetal Brain & Spine – Normal appearances & variants, timelines, Myelination.
- Fetal Chest & Abdomen – Normal appearances & variants, timelines.
- Fetal Environment - Umbilical cord, Placenta and Myometrium.

## Session 4A

[ 3 hours  
10.30AM-1.30PM ]

### HANDS-ON, Case-based Reviews – ‘Phillips DICOM Viewer’ ONSITE FACULTY

- Image Interpretation and approach to diagnosis.
- Pearls and Pitfalls in image interpretation.
- Ultrasound-MRI correlation in select cases.
- Clinical Problem-solving.

[ 1.30-2.30PM ]

### Lunch Break

## Session 4B

[ 4 hours  
2.30PM-6.30PM ]

### HANDS-ON, Case-based Reviews – ‘Collective Mind Platform’ ONLINE FACULTY

- Image Interpretation and approach to diagnosis.
- Clinical Problem-solving.
- Prediction of Outcomes – Scoring systems.
- Volumetric Analysis.
- Advanced MR applications.

### List of Cases to be covered in Session 4A - 4B

Corpus Callosum Agenesis / Dysgenesis

Posterior Fossa Anomalies including brain stem lesions.

Brain Parenchymal Bleed / GMH & Infections.

Malformations of Cortical development

Sulcation abnormalities.

Intra-cranial space-occupying lesions.

Vascular lesions

Cavum Septum / Optic Chiasma / Orbital lesions

Cranio-Facial / Skull base / Calvarial lesions

Spinal dysraphism

Spinal space-occupying lesions inc. SC teratoma  
CPAM / BPS

Congenital Diaphragmatic Hernia / Eventration

Gastro-intestinal Atresias / Strictures

Abdominal Mass lesions / Abdominal Wall defects

Obstructive Renal Lesions

Cystic Renal Lesions

Genito-urinary abnormality

Extremities / Body Wall Lesions

Placenta Accreta Spectrum

## Session 5

[ 30 mins  
6.30 -7.00PM ]

### Integration into Fetal Medicine

- Fetal MRI-Impact on Clinical decisions.
- Communications with the referring Clinician.
- Patient Counseling.
- Open case presentations / discussions.
- Questions / Answers.

**VENUE:**  
CARAVELA BEACH RESORT, VARCA, GOA

## Register Now

[www.fmfindia.in/fetalneurogoa](http://www.fmfindia.in/fetalneurogoa)

For queries, contact:

Renuka Sangle on  
+91 9373718171 or

write to [info@fmfindia.in](mailto:info@fmfindia.in)



SCAN TO REGISTER